



Release Notes mViz 5.6

In this release, the Region object supports morphological operations such as Dilation and Erosion as well as checking for inclusion, exclusion, and new features...

The CharReader (OCR) now has a font optimization capability.

Many compute-intensive functions in Image Processing have been optimized using the AVX/AVX2 vector instruction set, for faster execution.

General

The Graph attribute FillColor now allows to draw the closed shapes with filling. By default the setting is NoColor. The shapes concerned are Dot, Box, Rectangle, Circle, Ellipse, Path and Poly (when the are Closed).

CAUTION: the previous default value was White, so the new default can cause some shape filling (e.g. Regions) to become invisible, until you set FillColor to the desired value.

Image Analysis

The class Region has a few new features: Area, Center, Mean and Variance. As their names imply, they compute, respectively the area, gravity center, mean gray-level and gray-level variance inside a region.

The class Region has new methods Dilate, Erode and Gradient that use a Morpho argument to specify a structuring element. The result is a new region that it the result of the morphological operation, as if the region was a binary image.

The class Region now has methods to compute the (rotated) bounding rectangle and bounding circle of a region. Check the methods Region::Rectangle and Region::Circle.

The class Region now has a method Region::Append, to transfer the content of an existing region.

Blob Analysis

There is now a method Blobs::BlobInRegionSelect that works in a similar way as the BlobInWindowsSelect, but relies on a general Region rather than a rectangular Window.

You can now add blobs “manually” to a Blobs object, by means of the method `Blobs::AppendBlob`. The new blob is supplied as a `Region` and can then be processed as a regular blob (feature computation, selection, sorting...)

The new method `Blobs::RegionBlob` informs about the relative positions of a blob with respect to a region, using the modalities in `RangeMode` (`Inside`, `Outside`, `Onside` or `Over`). This is similar to the `WindowBlob` method.

The individual runs that form a blob can now be queried using the methods `Blobs::NumBlobRuns` and `Blobs::BlobRun`.

OCR

When trained fonts include several instances of the same characters, the font can be optimized to improve the running time by retaining an essential subset. Check the method `CharReader::Optimize`.

Barcode reading

The methods `Code1DReader/Code2DReader::ExpandGS1` turn the standard string representation of a decoded barcode to a GS1 representation, with `Application Identifiers` isolated.

mViz+

There was some mess in the selection of blob features (radio buttons) in the Evaluate, Select and Sort tabs. This has been fixed.

Release Notes mViz 5.5

The release features substantial improvements of the OCR module, in order to ease the use of the predefined fonts. The sets of font images and files have been restructured.

General

The class `Status` now has two methods to implement timeout management. `Status::Timeout` starts a timer for a desired duration, while `Status::Expired` returns `True` as soon as the timeout duration has been exceeded. Note that it is the duty of the user to call the `Expired` function often enough. It is a non-blocking function, not causing an interruption.

Image Analysis

The feature `BlobFullPerimeter` has been added. It counts the number of pixels on the outline(s) of a blob, including holes. By contrast, the existing feature `BlobFullPerimeter` only counts the pixels of the outer contour. Hence, $\text{BlobPerimeter} \leq \text{BlobFullPerimeter} \leq \text{Area}$. A corresponding `Blobs::FullPerimeter` function is also available. Note that the feature `BlobPerimetricRatio` is still computed from the `BlobPerimeter`.

The method `Blobs.Point` returns the coordinates of the top-left pixel of a blob. This is useful to write a label near the blob.

OCR

New font files are available, together with the corresponding images that were used for training. For ease of use, whole character sets are included, to avoid a multiplicity of separate files.

A new property, `GlobalFilter`, is meant to select only the part of the character set that is relevant. The convention is as follows:

	<u>A</u> lphabetic	<u>L</u> owercase	<u>U</u> ppercase	Digit	Special	Any
Alone	a	l	u	9	.	*
+ digits	A	L	U			
+ special	b	m	v	0		
+ digits + special	B	M	V			

A new property, `InkingCorrection`, has been added to adjust when the stroke thickness of the characters to be recognized does not match the thickness of the trained ones. This can occur when using the predefined font files.

The class `CharReader` has the new (advanced) property `OCVScoring`. It is used to assess the score of the characters even if they were specified verbatim in the filter (so don't need to be recognized). In OCR applications, these scores are not needed. In OCV applications, they are an inspection result.

The method `CharReader::GetLayoutBoxes` can now be used to retrieve the coordinates of the bounding boxes after character segmentation.

The internal spacing rules in the reader have been modified. This can imply differences in the segmentation results in the limit cases.

Gauging

The `SnakeGauge` now has a `Clear` method to reset it.

mViz OCR

The new features `GlobalFilter`, `InkingCorrection` and `OCVScoring` are now supported.

The use of a `Window` to delimit the reading area is now optional. Check the `Zoom` menu.

Zooming is now automatic when you load an image.

The path to the font files was not remembered correctly from one execution to the next. This has been fixed.

Release Notes mViz 5.4

mViz is now available for the ARM64 processor under Linux. In particular, it is available, on demand, for the Raspberry Pi platform.

We remind that mViz is also available on demand for the x64 processor under Linux.

General

The class `Graph` was preallocating a number of GDI objects to avoid repetitive creations/deletions. Dynamic objects are now used, drastically reducing the GDI resources consumption.

When reading a palettized bitmap (BMP) image (8 bpp), the palette is honored. This complicates the determination of the image type (Rgb or Gray) when the file is read as `Undefined`. We have adopted the following rule: when all palette entries are achromatic (three equal components), the image is read as Gray; otherwise as Rgb.

The display of `Graph::Dot` with a zero size (single pixel) was off by one. This has been fixed.

The method `Operator::Copy` can be used for type conversions in addition to mere copying. So far, in-place type conversions (same source and destination) were not possible. This possibility has been added.

Image Analysis

The new methods `Blobs::FeatureMaximumIndex/FeatureMinimumIndex` return the index of the blob that has the largest/smallest value of a feature. This allows to query other features of this blob.

The features `BlobFeretBox` and `BlobDiametralBox` are now computed in such a way that `Width ≥ Height` and `Angle` is between 0 and a half-turn. The same convention holds for `Path::Rectangle` and `XY::Rectangle`.

The method `Profile::LocalExtrema` has been added to detect maxima or minima in a profile.

The methods `Morpho::RegionalMaxima/Minima` are controlled with a parameter `MaxCount`, which limits the number of points reported (the best ones). Now when the value 0 is passed, all the detected points are returned.

Calibration

Two new calibration modes have been added: `BiQuadratic` and `Rational`. By contrast with the `Quadratic` mode, `BiQuadratic` does not assume that the deformation is centered on the image and requires at least six landmarks. `Rational` is the combination of `BiQuadratic` and `Perspective`.

Snake

The method `SnakeGauge::EdgePoint` was reporting an error due to bad index checking. This has been fixed.

Code Reading

It is often the case that when printed with ink jet printers the Dot Codes are skewed due to scanning motion. The new method `Code2DReader::DCCorrectGeometry` can be used as a hint to the reader to improve the readability, when the skew information is available.

Due to an unfortunate change in the license management, the Demo license was only enabled for the EAN13/EAN8 symbologies. This has been fixed.

In some cases, the `Code1DReader`, with `NumDirections` set to `Auto`, could report slanted codes twice. This has been fixed.

mViz+

Due to the introduction of templated types in the 3D Module, the variable data types could be shown incorrectly in mViz+ and in the generated scripts. This has been fixed.

In the scripts, some data types were incorrectly prefixed with the namespace or misspelled in VB. This has been improved.

mViz OCR

The path to the font files was not remembered correctly from one execution to the next. This has been fixed. Zooming is now automatic.

Release Notes mViz 5.3

This release brings a major progress with the 3D inspection module. This module includes support to represent point clouds (sets of unrelated points in space obtained from some 3D image source) and point meshes (triangulated surface).

The module supplies different geometric measurements such as dimensions, surface, volume, performs registration and surface comparison, in order to report defects with respect to a template.

Image processing

The definition of a Region from a Quad object was missing the first row in the case of an axis-aligned rectangle. This has been fixed.

When appending a Quad to a circular or annular Region of aperture 360°, pixels could be missing at the junction, due to numerical errors. This has been fixed.

You can now define the inside of an ellipse as a Region. Check the method `Region::EllipseAppend`.

The operations on Regions, namely `Invert`, `Intersect`, `Unite` and `Subtract` were producing wrong, unpredictable effects when done in-place (one of the source region arguments being the same as the region instance). This is fixed. Hence repeated operation on the same region (for aggregation) is now possible.

The classes `Path` and `Poly` support new geometric methods to obtain the tightest bounding rectangle and bounding circles. Check the methods `Path::Rectangle`, `Path::Circle`, `Poly::Rectangle` and `Poly::Circle`.

Image Analysis

The method `Blobs::Segment` on a grayscale image taking a Region argument (`Mask`) could cause crashes in case the limits of the region exceeded the image vertically (`ordinate < 0` or `≥ Height`). This has been fixed.

The `Path` and `Poly` objects now have methods to compare a closed shape to a known rectangle or a known ellipse, by computing the average distance between the vertices and the shape. Check the methods `RectangleDeviation` and `EllipseDeviation`. These can be used with the results of ellipse fitting or bounding rectangle computation.

Code Reading

In some cases, error correction of the Data Matrix codes was behaving incorrectly, giving incoherent decodes. This has been fixed.

The reading rate of the Dot Codes has been significantly improved.

Character Reading

There was a wrong handling of the `Constrast` parameter in the mode `WhiteOnBlack`, preventing correct character rating. This has been fixed.

3D inspection

Check the new chapter "3D Inspection" in the manual.

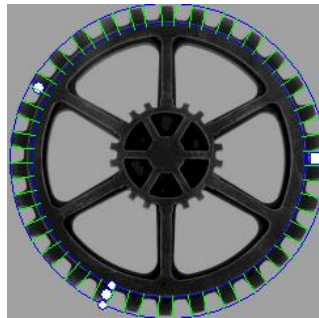
Template matching

The search can now be performed in a region of interest of arbitrary shape. Check the methods `Locator::SearchMask`. The mask needs only be set once before searches are performed.

The methods `Locator::Draw` and `Locator::Location` now take an extra `Depth` argument, which is useful mainly when `StopDepth` differs from 0. The default value, -1, ensures that the location at `StopDepth` is reported. The value 0 corresponds to full scale.

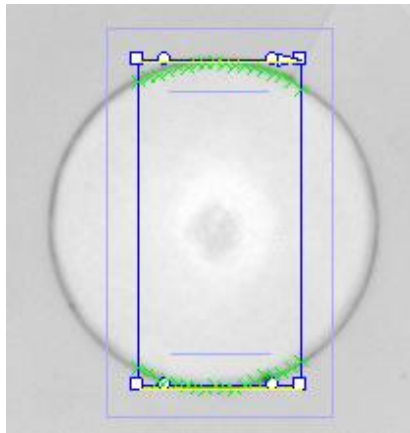
Gauging

The EdgeArc gauge is now able to detect edges across the circumference rather than along it. This is similar to what an EdgePoint gauge can do, but on a curved segment.



Detection along the circle

The EdgeRectangle can now act as a caliper, i.e. measure the distance between two edges in a single go. This is obtained by setting the parameters `FourSides=false` and `FittingSide=Before`.



Caliper function

mViz OCR

The utility mViz OCR has a new mode of operation. After characters have been detected, it tries to read them using a set of font files, in order to guess the effective font (if already known).

mViz 3D

The new utility mViz 3D is available to test and try the 3D module capabilities as well as to generate inspection models.

Release Notes mViz 5.2

New in this release:

Explicit support for Visual Studio 2022 has been added (precompiled libraries and sample programs).

The .NET wrapper is now compiled for the framework version 6.0, in addition to 3.5, 4.0 and 4.6.

The decoding capability of the Code2DReader has been significantly enhanced. It is able to decode the lacunary codes that could be generated when following the pre-4.0 standard (though the latter are obsolete).

The EdgeEllipse class has been added to the gauging tools.

General

The attribute `Graph::LineThickness` (in pixels) has been added. The default is 1, as before.

`Graph::EllipseArc` has been added to draw a partial ellipse.

Image processing

Now all image processing filters (transforming an image into another image) can be applied in-place, i.e. with the destination same as the source.

`Region::Fill` could result in wrong results or access violation in case that the `Region` exceeded the source image limits. This has been fixed so that only the pixels that fall inside both the source and destination images (or `Window`) are copied.

The functions `Histogram::Noise` and `Histogram::ShowNoise` now allow to choose between two filter sizes, the larger being more accurate.

Dot Code Reading

The property `Code2DReader::ObsoleteDotCode` allows working around a flaw in the standard before version 4.0, such that lateral rows with no dot at all are possible. The Reader will process such codes correctly. For newer codes that comply with AIM ISS DotCode Symbology Specification 4.0, leave this property as `false`.

The property `Code2DReader::QuietZoneClutter` lets the reader deal with spurious stains or debris in the quiet zone area. If the periphery of the code is clean, you can disable this feature.

The reading capability of the Dot Codes has been improved.

Gauging

An `EdgeEllipse` gauge has been added. It works in a way similar to the `EdgeArc`, and allows two axis of different length and arbitrary direction. It can be useful to measure circles viewed in perspective, or real elliptic shapes, open or closed.

In the drawing of the gauge handles, the beginning handles are now drawn square rather than round, to distinguish. This is purely cosmetic.

The property `EdgeArc::Circle` has been renamed `EdgeArc::Closed`, for consistency. This can impact code that uses it, but the functionality is unchanged.

mViz+

Support for the `EdgeEllipse` has been added.

Some variable declarations could be duplicated in the generated scripts. This has been cured.

Release Notes mViz 5.1

New in this release:

The selection of the instances in pattern matching is now governed with a contrast criterion in addition to the matching score. This is useful to avoid false occurrences found in dark areas.

General

A function `Graph::Rectangle` has been added to draw a rotated rectangle. We recall that an upright rectangle can be drawn with `Graph::Box`.

The size of an image can now be obtained as a pair `Size` `Image::Size()` rather than separate `Width`, `Height` properties.

The `Vertex` argument of `ArcPath::Draw` (drawing of a curvilinear path) has been changed from `Boolean` to `integer` to allow specifying a marker size. This could break existing `.NET` code.

Image processing

The argument `Connexity8` of `Morpho::RegionalMaxima` was not honored when `false`. This has been fixed.

The method `Path::Smooth` was not always handling closed paths correctly near the closing. This has been fixed.

`EdgeMap::Draw` now allows to specify the size of the vertices rather than presence/absence, following the size convention of `Graph::Dot`. Caution: the argument `EndpointSize` was previously a `Boolean` type.

The method `Operator::Convert` for color system conversion can now be used in-place (output image same as input).

Dot Code Reading

Decoding of *rectangular Data Matrix* codes could sometimes fail due to bad internal initialization. This has been fixed, and the decoding rate is improved. Square codes are not impacted.

The parameter `StartLevel` can now be set to the value `-2`. This magnifies the image by a factor 4 (while `-1` corresponds to a factor 2). This feature should only be used on difficult tinny codes, as it will significantly increase the running time.

Template matching

The method `Locator::Train` with a `Region` mask argument was assuming that the region origin was `(0, 0)`. The method now takes an extra argument `SrcWindow`. When `true`, the origin is the origin of the `Src` image (in case it has a `Window`). As the default is `false`, existing `C++` code is not impacted. `.NET` code requires the new argument.

The property `Locator::MinContrast` is now exposed to allow filtering out too dark instances. The default value is `0.25`, meaning that reducing the ambient light by a factor four will result in the disappearance of all instances. In such situation, the minimum contrast can be lowered.

As a consequence, 1) the `Pose` information now contains the measured contrast as member `Contrast` and 2) a new overload of `Locator::Draw` allows enabling the display of the numerical values of the scores and contrasts.

mViz Code2D

The parameter `StartLevel` (used to optimize the search for tiny or huge codes) is no more exposed as a variable range. This was useless as all levels above it are tried anyway.

Release Notes mViz 5.0

New in this release:

- Improved omnidirectional barcode reading;
- Improved line and circle fitting, and ellipse fitting;
- The `Locator` can be trained with an "external" edge map;
- Miscellaneous fixes and improvements.

As of mViz 5.0, licenses for 5.x are required. Upgrades from lower versions can be obtained.

The new module `Inspection` requires a specific license. Anyway, it is also included in the `Full Set`.

General

The function `Graph::ZoomToWindow` was ignoring the presence of scrollbars, sometimes causing part of an image to remain hidden. This behavior has been changed.

Saving an image with a `.jpg` or `.jpeg` extension resulted in the file being a BMP format internally, instead. This has been fixed.

The properties `Width` and `Height` of the `Region` objects have been discarded because of the cost of the (unnecessary) updates. These values can now be explicitly queried via the method `LimitsBox(int Margin= 0)`.

`Graph::Offset` now has an overload taking a `Site` argument instead of separate coordinates.

Image analysis

Methods `Path::EllipseFit` and `Poly::EllipseFit` have been added. They allow a best fit of an ellipse to a `Path` or `Poly`. In the same way as the similar `LineFit` and `CircleFit` methods, they support `Accurate` (outlier-free data) and `Robust` modes.

The function `Path::Ellipse` was conceptually wrong and we decided to remove it. It is now replaced by `Path::FilledEllipse`, that has a different behavior. If that causes an issue for you, please contact the technical support.

The method `EdgeMap::GradientMaxima` has a new parameter `UpperLimit`, that allows to suppress the high gradient values (the low values are suppressed below the parameter `Noise`).

The methods `Draw` of the `Pyramid` object now draws the images of the various levels in a non-overlapping way. This behavior can be changed by means of the `Overlapping` argument.

The required offset for a given pyramid level can be queried with `Pyramid::DrawingOffset`.

Gauging

The parameter `Size` of `EdgeRectangle::Locate` was incorrectly passed, resulting in wrong gauge dimensions. This has been fixed.

The line segments suffered from a wrong reference direction, causing the polarities to be incorrectly handled. This has been fixed.

Template matching

The `Locator` can now be trained with an edge map image rather than a plain grayscale. This allows to feed the result of a gradient filter or the output of the `EdgeMap::GradientMaxima` or `EdgeMap::StrongEdges` methods. The map must be non-maxima suppressed (thin edges).

Bar Code Reading

The `Code1DReader` now supports reading in arbitrary directions without having to adjust `NumDirections`. As a benefit, the running time does not increase with `NumDirections`. To obtain this effect set `NumDirections` to the `Auto` value, as is now done by default. CAUTION: if existing code relies on the previous default value 2, consider choosing between `Auto` and 2.

OCR

The property `CharReader::MinimumContrast` has been added. It is helpful to discard dark features that could be taken for characters.

Dot Code Reading

The property `Code2DReader::AccurateEdges` is no more activated by default, as this is not always necessary.

Inspection

The methods `EdgePoint` and `RibbonPoint` have been added to the `SnakeGauge`. They allow you retrieve the coordinates of the points found during inspection.

Caution, for consistency, `SnakeGauge::AssessEdges` has been renamed `SnakeGauge::AssessEdge`. Existing code will be impacted.

The folder `Images` now contains the files `Gasket_Ribbon.png` and `.sng` that are used as demos for the ribbon inspection mode.

There were several inconsistencies in the GUI of the utility `mViz Snake`. They have been fixed.

The Help information was wrong. This has been fixed.

Interaction with zoom on could cause wrong behavior. This has been fixed.

mViz+

The class properties with an enumerated type are now echoed as the relevant enum value rather than a cast integer.

Release Notes mViz 4.5

The release features a new powerful tool called `Snake`. It lets you perform inspections along a path of arbitrary shape. Try the utility `mViz Snake` and play with the image `SnakeTest.bmp` and the model file `SnakeTest.sng`.

The libraries compiled with Visual Studio 2019 are now available.

Notice that this is the last release to come before the version 5.

mViz Snake

There is new utility application called `mViz Snake`. It lets you create, edit and test a `SnakeGauge` interactively. A `SnakeGauge` has the capability to inspect an edge of arbitrary shape, made of a sequence of line segments, circular arcs or splines. The deviation from the ideal shape can be assessed in different ways. The `SnakeGauge` can also inspect the width of some ribbon following this path, and detect anomalies.

After design, the layout of a snake can be saved to disk for reuse in your application. You can also create your own interactive editor.

General

The method `Image::Read` was causing memory leaks when reading `.png` files. This has been fixed.

The class `Graph` now supports the method `Bezier` to draw a cubic Bezier arc.

Image processing

The methods `Operator::DeBayer` for Bayer-pattern reconstruction, `Kernel::Convolve`, `Operator::Equalize` and `Geometry::Transform` did not support not working in-place (source = destination). This has been changed.

The method `Morpho::Distance` now supports 16 bits values, allowing to process large images (distances up to 32767 pixels). Check the new argument `Large`. When set to `true`, the result image is of the type `Gray16`.

A method `XY::Circumcenter` has been added. It computes the center of the circumscribed circle by three given points, and only that.

The method `EdgeMap::Step edges` takes a new argument `ShowPolarity` that enables an output mode compatible with the convention `white=edge, black=non-edge`.

The value of the noise amplitude in `Histogram::Noise` has been adjusted to correspond to the standard deviation in case of Gaussian noise.

An overload of the function `Profile::EdgeDetect` is now available. Instead of returning all detected edges, it returns the strongest.

The objects of the classes `Profile`, `Path`, `Poly` and `Region` now have `Write` and `Read` methods for file archival.

The class `Poly` now has the same methods as some already found in `Path`: `Smooth`, `LineFit`, `CircleFit`, `Center`, `LineDeviation`, `CircleDeviation`.

The method `Region::Invert` is now available to get the complement of a region with respect to a rectangle (image window).

Appending to a `Profile` without first initializing it (`Profile::Append`) was not possible. This has been changed.

The method `Geometry::Transform` to apply a precomputed geometric transformation was inaccurate in the interpolation mode. This has been fixed.

The filtering method `Profile::BoxHighPass` was performing a rescaling of the signal. This rescaling has been removed. The computed values will be impacted.

Blob Analysis

When computing the feature `BlobConvexAreaRatio`, the convex areas and the ratio were wrongly computed as negative values. This has been fixed. The computation of the feature `BlobConvexArea` alone did not have this problem.

If this a problem for you, please contact the technical support.

Gauging

CAUTION: we changed the `BestSpan` policy in the `EdgePoint` gauge to select the shortest rather than the longest span. This is more logical as edges with a long span are of little interest. This will change the behavior of existing code that uses this feature.

Bar Code Reading

The flag `SymbologyIdentifier` has been added to enable/disable the insertion of the FNC1-in-first-position marker `]C1`.

Dot Code Reading

Due to a wrong internal transfer of information, the `Code2DReader` was not able to process the `DotCode` symbology. This has been fixed.

The `Code2DReader` was causing a memory leak. It has been fixed.

mVizNET

The following symbolic constants were missing and have been added (in the class `Constant`):

```
Constant::Auto  
Constant::NotInitialized  
Constant::MinShort, Constant::MaxShort  
Constant::MinInt, Constant::MaxInt  
Constant::MinFloat, Constant::MaxFloat
```

mViz+

The context menu of an image now provides a command `Copy Window to Clipboard`, which copied the content of the window (with annotations) rather than the bare image.

The name of the `ClippingMode` in the scripts was sometimes wrong. This has been fixed.

The `Regional Minima` in Morphology were not displaying, contrary to the `Maxima`. This has been fixed.

Release Notes mViz 4.4

This release features a nice improvement in the `EdgeLine`: you can now fit a line against an edge rather than over it, so that the fitted line wholly remains on a side of the edge. This is useful for gauging of edges with cracks.

The `Blobs` detector supports two new features for shape assessment.

Image processing

The class `Poly` now has a `ConvexHull` method. It works the same way as that in `Path`.

The comparison operators `Operator::Equal/Greater Test` were returning wrong results on RGB images (these functions are marginally useful).

Creating a `Region` with a circular `Quad` object then getting the region outline could result in an infinite loop because of an algorithmic flaw. This has been fixed.

The methods `Profile::Plot` and `Histogram::Plot` were swapping the red and blue components. This has been fixed. It only affected the display, while the stored values were correct.

The method `Histogram::Bin` has a new overload taking a `Component` argument, to retrieve the frequencies when the image type was `Rgb`.

The methods `Operator::EqualTest` and `Operator::Greater test` were not working correctly with color images. This has been fixed.

The method `Region::Follow` was not resetting the `Path` argument, and this has to be done externally. This behavior has been changed.

In some particular cases, the method `Region::QuadAppend` could cause a later call to `Fill` to hang. This has been fixed.

Two models have been added to the calibration tool: `Mirroring` and `Reflection`. These are the equivalents of `Rotation` and `Similarity`, but with inverted coordinate system. Check the enumeration `RegistrationModels`.

Blob Analysis

The features `FilledArea` and `FillingRatio` have been added. They allow to detect “hollow” blobs.

The arithmetic operations on Regions (`Unite`, `Intersect`, `Subtract`) could fail when the regions were obtained from blobs because of interference with the blob labels. This has been fixed.

Template matching

The `Locator` could hang on images containing little features. This has been fixed.

The `ShapeMatcher` was not correctly handling the recognition based on selected blobs. This has been fixed.

Gauging and Calibration

The `EdgeLine` gauge has a new property `Fitting` that specifies if the fitting must be made against the edge (one of two sides) or over it. Check the values of the enumeration `FittingSide`.

The `Edge...` gauges were ignoring profiles extending past the image edges. This behavior has been changed and partial profiles are now possible.

The parameters of the Similarity transform (`Geometry : :ModelFit`) could be computed wrongly. This has been fixed.

Bar Code Reading

The detection of the Start/Stop delimiting patterns of the ITF symbols was too permissive (since `mViz 4.3`), resulting in many false detections in valid barcodes when this symbology was enabled. This has been fixed.

Dot Code Reading

QR codes: when a Kanji field is met, the reader will now generate a `\000020` ECI, followed by the decoded data in the Shift JIS encoding. (Without such a delimiter, string interpretation by the application would have been impossible.)

QR codes: the reader was emitting the `SymbolPosition`, `SymbolTotal` and `Parity` in the returned string, in case on an (unbuffered) `Structured Append`. This has been suppressed, and the values are reported in data members instead.

OCR

The reader will now return a relative contrast value in addition to the matching score. This is useful for text quality assessment. Check the member `AverageContrast` (global) and method `CharContrast` (per character).

Switching between the `NoLayout` and `FlexibleLayout` modes could cause malfunctions because of wrong internal updates. This has been fixed.

Reading a font after a call to `DeleteFontChar` could cause a freeze. This has been fixed.

mViz+

Scripts generated with scalar arguments returned by reference were wrongly inserted in the scripts. This has been fixed.

The integration of the `ShapeMatcher` was very poor. This has been improved.

Release Notes mViz 4.3

This release includes three important enhancements:

- The code reader now supplies the Quality Indicators for the QR codes;
- The locator has been enhanced to allow the detection of overlapping template instances.
- mViz is now available for the Vision Component Nano-Z smart camera, on request.

General

Some sections of the User's Manual were missing. This has been fixed.

Image processing

Path::Draw now allows to specify the size of the vertices rather than presence/absence, following the size convention of Graph::Dot. Caution: the argument VertexSize was previously a Boolean type.

All morphological filters now perform a straight image copy for a structuring element of zero size. This eases comparison with the original image.

The method Region::Box has been added to obtain window limits around a defined Region. This is useful to optimize the processing cost for filtering in a region.

Now instead of, for instance,

```
// Apply the Prewitt, using an image of the same size
Prewitt0.Set(Src);
Kernel::Canny(Src, Prewitt0, Canny2Gradient);

// Transfer to the source image, inside the wedge
Wedge.Fill(Prewitt0, Src);
```

you can use

```
// Get the region bounding box, with a 1 pixel margin
Limits L= Wedge.Box(1);

// Apply the Prewitt filter in the bounding box
Prewitt0.Set(Src);
Src.Window(L); Prewitt0.Window(L);
Kernel::Canny(Src, Prewitt0, Canny2Gradient);
Src.Window(); Prewitt0.Window();

// Transfer to the source image, inside the wedge
Wedge.Fill(Prewitt0, Src);
```

The comparison operators Operator::CompareEqual and .

Blob Analysis

The computation of the Centroid feature could cause a division by zero exception in case of a black blob. This has been fixed.

Template matching

A property Locator::MaxOverlap has been added to allow detection of touching or even overlapping template instances.

The method `Locator::EdgePoints` was returning wrong coordinates in the degrees angular mode. This has been fixed.

The `ScoreType` property is no more supported. The default value, `NGCScore`, is always used. If this is an issue, contact the Technical Support.

Peephole improvements have been made.

Dot Code Reading

The full set of Quality Indicators is now available for the QR Codes. (Do not forget to set the `CheckQuality` flag.)

The indicators are, by order,

- **Overall Grade:** this takes the worst of the grades below, giving a global idea of the printing quality.
- **Symbol Contrast:** indicates how different the foreground and background intensities are. The larger the better, as noise, dirt or other degradation can modify these intensities and complicate location/decoding.
- **Print Growth (Horizontal and Vertical):** a measure of the relative thickness of the black/white cells, which can be adverse because of overinking/underinking or similar effects due to the marking process.
- **Axial Non Uniformity:** indicates if the size of the cells differs along one axis compared to the other. This is often an indication of a mismatch in marking speeds across and along the substrate.
- **Grid Non Uniformity:** indicates if the cells are aligned on a regular grid, with no local deformation. This is often an indication of a mechanical disturbance in the marking motion.
- **Unused Error:** the 2D codes have a built-in error decoding capability, enabled by redundancy in the content. The more error correction capacity is consumed, the more likely a reading failure can arise.
- **Modulation:** is a measure of the uniformity of the reflectance of the light and dark cells respectively. Uneven modulation can be caused by irregular ink supply.
- **Reflectance Margin:** is a measure of how well each cell is distinguishable as light or dark in comparison to the global threshold. Insufficient margin can be caused by irregular ink supply or lack of contrast.
- **Fixed Pattern Damage:** detects various anomalies in the fixed parts of the code (finder pattern). Damage in these areas can make the symbol undecodable by lack of proper geometric references. The causes can be diverse.

Two extra indicators are QR Code-specific:

- **Format Information Damage:** checks if the three Format fields (alongside the three finder patterns) are unaltered. Wrong format information makes the QR unreadable.
- **Version Information Damage:** checks if the two Version fields (near two of the finder patterns) are unaltered. Wrong version information makes the QR unreadable.

In some rare circumstances, Data Matrix codes with a complex geometry could cause a freeze. This has been fixed.

The accuracy of some Quality Indicators of the Data Matrix has been improved.

Bar Code Reading

The readability of the Interleaved 2 of 5 codes has been well improved.

Due to wrong coding, multiple barcodes side by side had a low reading rate. This has been fixed.

Release Notes mViz 4.2

This release fixes a number of minor issues. Powerful line and circle fitting functions have been added, as well as assessment of linearity or circularity. They operate on Path data. Some blur and edge detection filters have been added.

A new utility program, mViz Code2D, has been added to ease the setting of the dot code reader for difficult cases and optimize the parameters.

General

We recall that all angles, either user-input or computed by mViz are expressed in Degrees by default. You can change this behavior by setting

```
Status::AngleUnit= Status::FromRadians;  
Status::UnitAngle= Status::ToRadians;
```

Both assignments are required.

The Image class now provides a method Area which returns the number of pixels in the current Window or whole image.

The Status::License function has been improved for easier assessment of plain/temporary license and presence/absence of a dongle. Note that for security reasons, the full documentation of this function is only delivered upon request to the Technical Support.

Image processing

Several new fast filters have been added to support Gaussian and Canny filtering. They appear as Kernel::Binomial/5/7/9 lowpass filters, and as Canny/1/15/2 for the GradientType of the Kernel::Canny and EdgeMap::GradientVector/GradientMaxima/StrongEdges methods.

A filter Kernel::CannyPhase has been added, supporting one the above Canny GradientType. It returns the orientation angle of the gradient vector as a value in range [0..255], corresponding to the angular ranges [0..360] or [0..180] (polarity invariant).

Blob Analysis

The computation of features that require the gray values from the source image, namely Mass, Centroid, Ellipsoid, Average, Deviation, Minimum, Maximum and Histogram required the Window of the source image to be reset, for proper computation. This is no more required.

Code Reading

The Extended Code 39 barcodes could fail to be properly decoded in case they included a non-terminating asterisk * character. This has been fixed.

Gauging

The Path object now supports fitting of a line or circle model to the points. This can be made in a standard or robust way, i.e. when there are alien "garbage" points in the data. Check the methods Path::FitLine and Path::FitCircle. Notice that these advanced functions require the Gauging or Calibration license.

The methods `Path::LineDeviation` and `Path::CircleDeviation` (for linearity and circularity assessment) have been enhanced to support explicit specification of the reference line/circle position by the user. The latter can also be obtained automatically by the above `FitLine/FitCircle` methods. This change will impact the code using them.

The negative indexing (i.e. n^{th} from end) was not working correctly in the `Decode` method of the `Edge` gauges when a single edge polarity (`Raising` or `Falling`) was chosen. This has been fixed.

Template matching

The `Locator` object now exposes the method `EdgePoints`, which retrieves the outline of a given instance of the template and stores them in a `Path` object. This method is meant for display purposes.

Release Notes mViz 4.1

This is an intermediate release with miscellaneous improvements.

General

The `Limits` objects (rectangle/window limits) can now save their settings and retrieve them from a file. Check the methods `Read` and `Write`.

The `Quad` object now has a `SetCenter` method with less arguments, to create a circle with no worries on the arguments.

Blob Analysis

The `Blobs` context now has a method to pick the blob with the smallest or largest feature value. Check the method `Blobs::ByFeatureFirst`.

The `Centroid` and `Ellipsoid` features of a completely black blob (all pixel values equal zero) cannot be computed. This was causing an arithmetic condition. It is now handled correctly and the corresponding features are left as not-computed.

Image processing

The method `Histogram::ShowNoise` has been added to the image quality functions. It gives visual feedback about the intensity and distribution of noise in an image.

Methods `Path::LineDeviation` and `Path::CircleDeviation` have been added to assess straightness (smoothness) of straight and curves edges found in a path.

New `Gradient` types have been added. They correspond to Canny filters of different strengths. Check the `GradientTypes` enumeration.

The `Morpho::Watershed` image segmentation method now accepts images of type vector gradient (rather than grayscale gradient), such as those computed by the class `EdgeMap`.

Calibration

The fitting of a `Scaling` model could result in wrong calibration parameters. This has been fixed.

Code Reading

The 2D code reader now supports an “inking correction” feature. When the cells are too thin or too fat, morphological processing can be applied internally to improve the decoding rate. Check the property `InkingCorrection`. It should be clear that this feature is also usable with direct part marking.

The detection of the QR codes has been enhanced. Some cases such that one of the finder pattern (corner) is damaged can now be decoded.

The Grid grading Quality Indicators were not properly computed in mViz 4.0. This has been fixed.

Gauging

The EdgeRectangle widget has a new working mode to measure thicknesses. The new property FourSides is true by default, which fits a rectangle. But when set to false, it will only fit two parallel sides, so that their distance can be obtained.

The EdgeArc object was not saving all required position properties with the methods Read/Write.

The functions EdgeRectangle::HitHandle and EdgeRectangle::Drag were not handling correctly the LengthHandle (sizing of the space around the rectangle edges). This has been fixed.

mVizNET

The Value objects Site and XY were missing many methods available in the native libraries. They have been restored.

mViz+

Some floating-point parameters such as CharReader::GapFraction or Geometry::CalibrateTarget::OriginRow/Column could not be set because of bad behavior of the widget. This has been fixed.

The method Geometry::Undistort following Geometry::CalibrateTarget was not operating. This has been fixed.

The method Blobs::ByFeatureFirst has been integrated.

The copy of a constant to a profile via Process > Point to Point > Profile Arithmetic... was not possible. This has been fixed.

Some operations on profiles could cause a fatal error because of wrong memory management. This has been fixed.

Note that problems that appear in mViz+ do not necessarily reflect problems in the library mViz.

Release Notes mViz 4.0

The major features of this version of mViz is that the installer becomes 64 bits by default. And more Microsoft compilers are supported: Visual Studio 2008, 2010, 2012, 2013, 2015, and 2017.

The .NET wrapper is now compiled for the framework versions 3.5, 4.0 and 4.6.

The image reader/writer libraries have been upgraded to the most current versions: Png 1.6.37, Jpeg 9c and Tiff 4.0.10.

General

The settings of several mViz objects can now be saved to/retrieved from a disk file (all code readers, all measurement gauges).

The following file extensions are now accepted as aliases when saving/loading images: jpg/jpeg, tif/tiff.

The working range of the Image::HitHandle function was too large on a zoomed image. This has been fixed.

Blob Analysis

The Gray1 image type (binary) is now supported for segmentation. Use the overload

```
int Blobs::Segment(const Image& Src, bool Above, bool Connexity8, int MinimumArea, int MaximumArea)
```

The method `Blobs::Segment` working with adaptive thresholding (`int Size` argument) and a mask was not using the mask and applied to the whole image. This has been fixed.

```
void Blobs::Segment(int Size, int Noise, const Region& Mask, const Image& Src, bool Above, bool Connexity8, int MinimumArea, int MaximumArea);
```

Due to a typo, sorting decreasingly on an integer feature was malfunctioning. This has been fixed.

Image processing

Several statistical functions were limited to an image size of $2^{23} = 8\,388\,608$ pixels. This limit has been increased to $2^{31} = 2\,147\,483\,648$. The row width is limited to $2^{15} - 1 = 32767$ pixels.

The method `Histogram::Normalize` has been added. It allows to transform an image by a gain/offset transformation so that its gray mean and standard deviation take specified values. This is useful to deal with images of wildly varying intensity or contrast.

Code Reading

The barcode and 2D reader objects (`Code1D/Code2D Reader`) can now save their settings and retrieve them from a file.

The `Code2DReader` was not appending a null byte at the end of the decoded string when `SymbologyIdentifier` was activated (though the string length was correct). This has been changed.

Character Reading

The flag `VariableWidth` was not saved correctly to the font files, and was always treated as true upon loading. This has been fixed.

The segmentation results of the `CharsSegment` and `CharsRead` methods were slightly different in the Dotted modes. This has been fixed.

Gauging

All gauge objects (`Edge Point/Line/Arc/Rectangle`) can now save their settings and retrieve them from a file. Check the methods `Read` and `Write`.

Classification

To avoid name clashes, the data access members `Classifier::Bool/Gray/Gray16/Rgb/Int/-Float/Dbble` had to be renamed with a suffix `Value` and are now `Classifier::BoolValue/-GrayValue/Gray16Value/RgbValue/IntValue/FloatValue/DbbleValue`.

mVizNET

The `Buffer` property of an image was not exposed. This has been changed.

Conversions between `.NET` and `mViz Images`, and conversely, are now available for all supported types. Note that `.NET` supports the 16 bits grayscale images very poorly, unlike `mViz`.

The `ref class` objects now have a destructor that deallocates unmanaged memory. Use them to force memory deallocation and avoid heap overflow when you create/destroy such objects frequently.

mViz+

The Filter parameter of Geometry::DownSample was set to false by default. This was not the intended behavior, it has been changed.

The operations reading from/writing to a file, now available for several objects, are now accessed via their respective Storage... menu entries.

mViz OCR

Many new font files are available. Check the Images\Fonts folder.